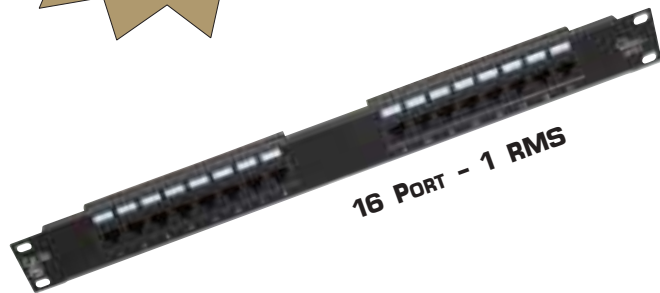


**Lifetime  
Warranty**

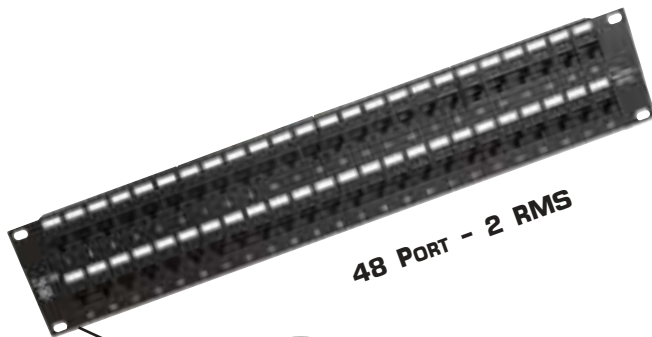
**Category  
5e**



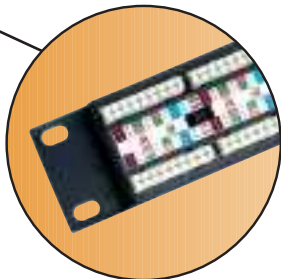
**16 PORT - 1 RMS**



**24 PORT - 1 RMS**



**48 PORT - 2 RMS**



**Universal 568A & 568B  
Wiring with Color-coded Labels**

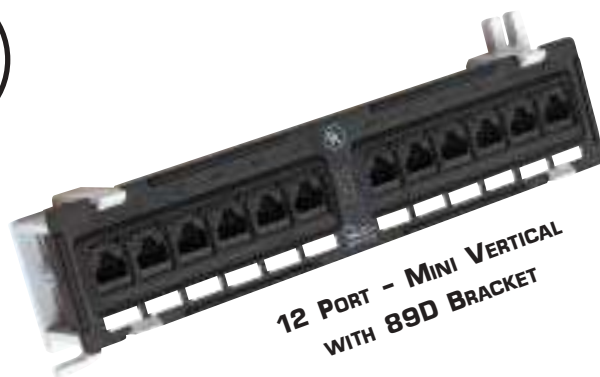


QUEST's Category 5e series patch panels provide several options for cross-connect solutions. They are Category 5e compliant, which meet or exceed TIA/EIA 568-A specifications and are offered in 16, 24 and 48 port configurations for 19" horizontal rack-mount installation. In addition, a 12-port "mini" vertical wall-mount panel is offered for small office cross connect applications. The panels are universally configured for both 568A and 568B wiring standards with easy to read, color-coded labels indicating the proper wiring scheme, and are designed with double folded frames offering outstanding resistance to twisting. The PC boards are protected with a terminal housing cover to protect them from damage when using a punch down tool. Termination is with 110 blocks, which accept 22-24 AWG cable.

**FEATURES:**

- 50u" GOLD PLATED CONTACTS
- DOUBLE FOLDED FRAMES
- 568A AND 568B UNIVERSAL WIRING
- PROTECTIVE PC BOARD COVERS
- UL LISTED

ITEM #	DESCRIPTION
NPP-1012	12 PORT CAT5e MINI PATCH PANEL, WITH BRACKET
NPP-1016	16 PORT CAT5e 19" PATCH PANEL
NPP-1024	24 PORT CAT5e 19" PATCH PANEL
NPP-1048	48 PORT CAT5e 19" PATCH PANEL



**12 PORT - MINI VERTICAL  
WITH 89D BRACKET**